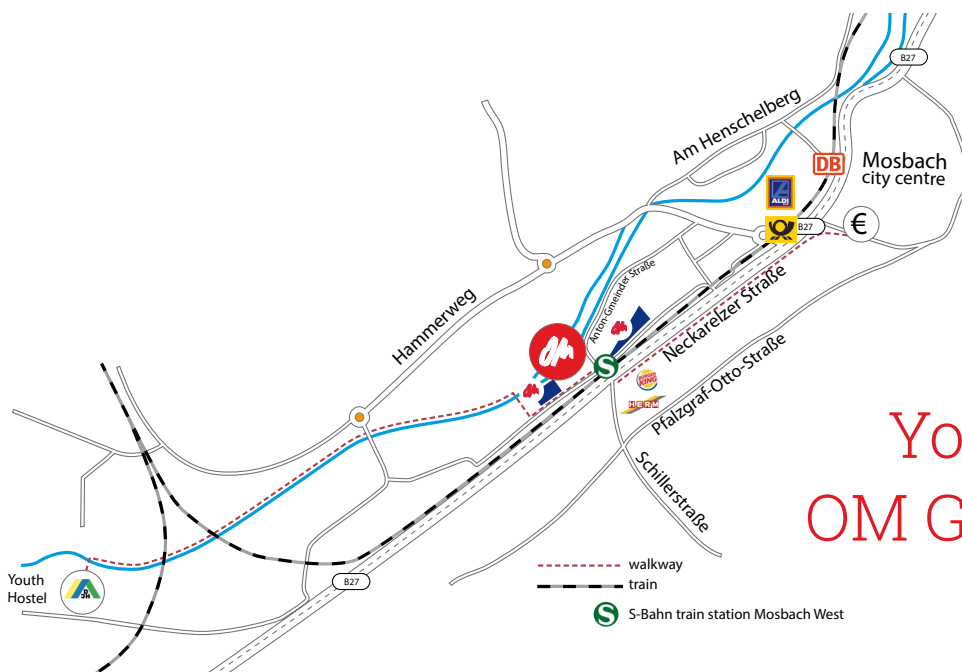




Leben verändern –  
Gesellschaft gestalten



## Your way to the OM Germany base in Mosbach

### Arriving by air

#### IMPORTANT GENERAL INSTRUCTIONS:

- ! At the airport follow the signs for “Züge”, “Fernbahnhof” or “Long distance trains”
- ! You must purchase a ticket before entering the platform or the train!
- ! Make sure to purchase your ticket to the station “Mosbach West” which is the station only 200 metres away from your final destination – the OM base! (Mosbach has 3 train stations, please do not get off at “Mosbach (Baden)” or “Mosbach-Neckarelz”).

#### SPECIAL INSTRUCTIONS BY AIRPORT OF ARRIVAL:

##### ... from Frankfurt International Airport to Mosbach West:

Frankfurt airport has its own train station for long distance trains („Frankfurt (M) Flughafen Fernbf“ – you don't need to go via Frankfurt main station). The train ticket is about € 37.

You need to change trains in Mannheim or Heidelberg. Ask the ticket officer or the train staff for details.

##### ... from Stuttgart Airport to Mosbach West:

From the airport you need to take the S-Bahn to the main train station (Hauptbahnhof) in Stuttgart. You need to buy a ticket (around € 21) right through to Mosbach West.

You might need to change trains in Heilbronn, Neckarsulm or Bad Friedrichshall. Ask the ticket officer or the staff on the train for details.

##### ... from Frankfurt-Hahn to Mosbach West:

Take the coach service between Frankfurt-Hahn airport and the Frankfurt main train station. At Frankfurt main station you must buy a ticket before entering the platform (about € 36 if it is an IC, EC or ICE train, you might have to pay a supplement of € 3).

You need to change trains in Mannheim or Heidelberg. Ask the ticket officer or the train staff for details.

#### USEFUL WEBSITES:

**Frankfurt International Airport:**  
[www.flughafen-frankfurt.de](http://www.flughafen-frankfurt.de)

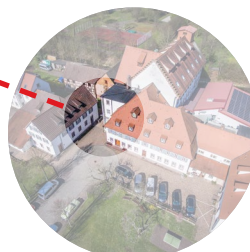
**Stuttgart International Airport:**  
[www.flughafen-stuttgart.de/english/index3.html](http://www.flughafen-stuttgart.de/english/index3.html)

**Frankfurt-Hahn:**  
[www.hahn-airport.de](http://www.hahn-airport.de)

**German Railway Company (Deutsche Bahn):**  
[reiseauskunft.bahn.de/bin/query.exe/en](http://reiseauskunft.bahn.de/bin/query.exe/en)



„EINGANG“  
ENTRANCE

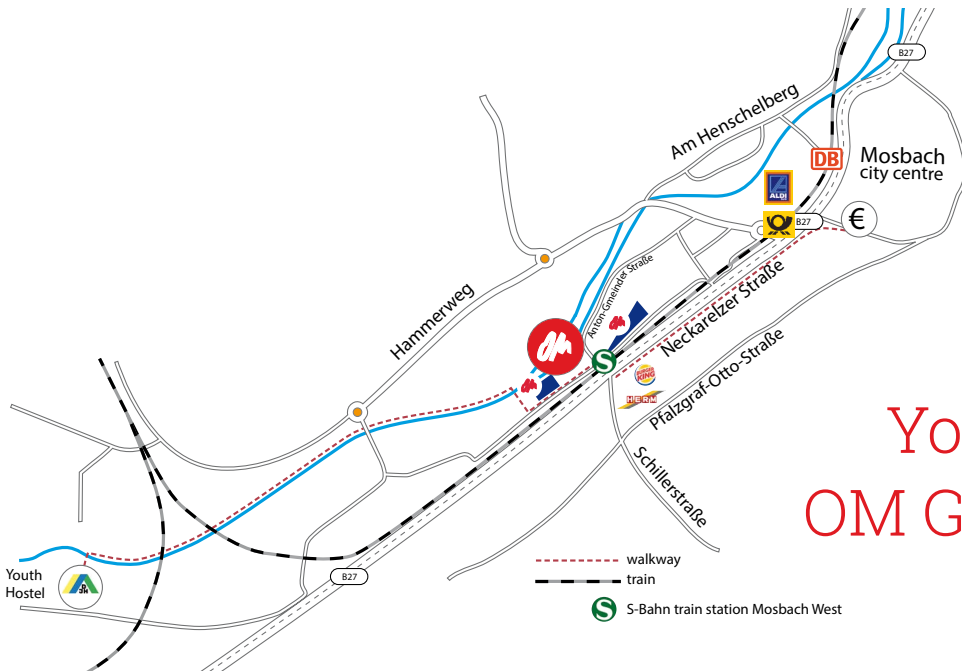


OM Germany  
Alte Neckarelzer Straße 2  
74821 Mosbach

Phone: 06261 947-0  
Email: [info.de@om.org](mailto:info.de@om.org)  
Web: [www.om.org/de](http://www.om.org/de)

Duty phone after office  
hours/at weekends:  
+49 (0)172 6284621





# Your way to the OM Germany base in Mosbach

## Arriving by car

Approaching from the north, the west or south-west it is best if you follow the Autobahn (motor-way) A5, A6 or A61 to the junction Walldorf (Walldorfer Kreuz) and then follow the A6 to Sinsheim. From here you can follow the signs on the B292 to Mosbach. As you enter Mosbach there is a “Herm” petrol station/ Burger King on the right. Just after this station take the next street on the left (there are traffic lights) which then passes under a railroad bridge. After this bridge drive straight and you will see the OM headquarters to the right. For parking please see parking instructions below.

From the east and south-east (A81 or A6) head for the Neckarsulm exit on the A6 north of Heilbronn and head towards Mosbach on the B27. You will approach Mosbach intersection (Mosbacher Kreuz) along the Neckar river. At the Mosbacher Kreuz you simply need to exit to the right and follow the main road (B27/292) into town. As you enter Mosbach there is a “Herm” petrol station/Burger King on the right. Just after this station take the next street on the left (there are traffic lights) which then passes under a railroad bridge. After this bridge drive straight and you will see the OM headquarters to the right.

**PARKING:** OM Germany has two parking lots as you find them marked in the map above.  
Thank you for not parking your car in the drive way in front of the main building.

**PLEASE NOTE:** The entrance to the main building is located on the left side of the building!

A road map should give you a good idea of how to reach Mosbach.

